



## FORD RANGER RAPTOR NEXT GEN MY2022 ON ROCK SLIDERS

### **IMPORTANT! – READ BEFORE INSTALLATION**

- This product must be installed exactly as per these instructions using only hardware supplied.
- Take a few moments to read instructions thoroughly before beginning work.
- In the event of damage to any bar component please contact OFFROAD ANIMAL to arrange repair/replacement of components.
- Do not use this product for any vehicle make or model other than that specified on these instructions.
- Do not remove labels from this product.
- This product and its fixings must not be modified in any way unless stated in these fitting instructions.
- The installation of this product is recommended for trained personnel.
- These instructions are correct at time of publication. OFFROAD ANIMAL cannot be held responsible for the impact of any changes subsequently made by the vehicle manufacturer. If you find something has changed please contact us to let us know!
- During installation it is the duty of the installer to check correct operation/clearances of all components.
- If Instructions are to be printed for reference in the workshop, it is recommended that they are printed in colour, for best legibility.
- Fitting time estimated 1-2 hours

## GENERAL CARE AND MAINTENANCE

Only wash the product with a PH neutral car wash to prevent paint damage and discolouration.

Plastic parts may be maintained with silicone spray.

Do not use acidic or alkaline based cleaning products.

It is important to perform regular checks (pre trip or on an annual basis) on the installed product. Checks include:

- Visual inspection for damage (eg. cracks, chips, dents etc.)
- Electrical wiring is not rubbing anything or worn out
- Bolts are torqued to correct specification (see torque guide below)

For touching up small stone chips, Offroad Animal recommends the following paint products:

- Dupli-Color Trim & Bumper Paint Black (TB101)
- VHT Hood, Bumper & Trim Paint Black (SP27)

## BOLT TORQUE SETTINGS

Use the following bolt torques on all general fasteners, unless otherwise specified.

GENERAL FASTENERS	
Size	Torque Nm
M5	5 Nm
M6	9 Nm
M8	22 Nm
M10	44 Nm
M12	77 Nm

Use the following bolt torques on all structural front bar mount and tow point fasteners, and rear towbar fasteners, unless otherwise specified.

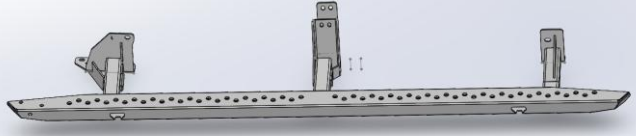

FRONT BAR MOUNTS AND TOW POINTS + REAR TOWBAR	
Size	Torque Nm
M10	57 Nm
M12	100 Nm
M14	164 Nm
M16	248 Nm

**Always use a torque wrench to set correct torque settings. Ensure torque wrench is set to Nm unit of measurement. Otherwise perform conversion to lb-ft.**

## PARTS LISTING

**IMPORTANT:** Check all parts are present before beginning work! Contact OFFROAD ANIMAL if something is missing.

### Main Parts – In the Box

Qty	Part Number	Description	Image
1	RSW-FRR-NG-22-ASM1L	Ranger Raptor Next Gen - Steel Slider Step Weldment	
1	RSW-FRR-NG-22-ASM1R	Ranger Raptor Next Gen - Steel Slider Step Weldment	

### Small Parts – Contained in Small Parts Kit Bag

Qty	Part Number	Description
4	BP-COM-M10X30-250-ASM0	Bolt Plate M10X30, 250mm stem
8	NP-COM-M10-170-ASM0	M10 LOLLYPOP NUT PLATE 170MM LONG
2	NP-COM-M10-80-ASM0	M10 LOLLYPOP NUT PLATE 80M LONG
4	M10 FLANGE NUT	Flange Nut, M10x1.5 G8.8 ZP
6	M10 FW LHD	WASHER, FLAT M10X28.5X2.5
6	M10 x 30	Bolt Hex, M10X30x[1.5], GR8.8 ZP
4	M10 x 120	Bolt Hex, M10X120x[1.5], GR8.8 ZP
4	M10 Flat Washer	M10 FW
6	M8 HD FLAT WASHER - BZP	M8 FLAT WASHER - High Tensile 19x8x2mm, ISO4042 ZnNi BLACK PASSIVATED FINISH
6	M8 X 20 BHCS BLACK ZINC	SCREW, BUTTON HEAD CAP, M8X20X1.25, ISO4042 ZnNi BLACK PASSIVATED FINISH

TOOLS REQUIRED

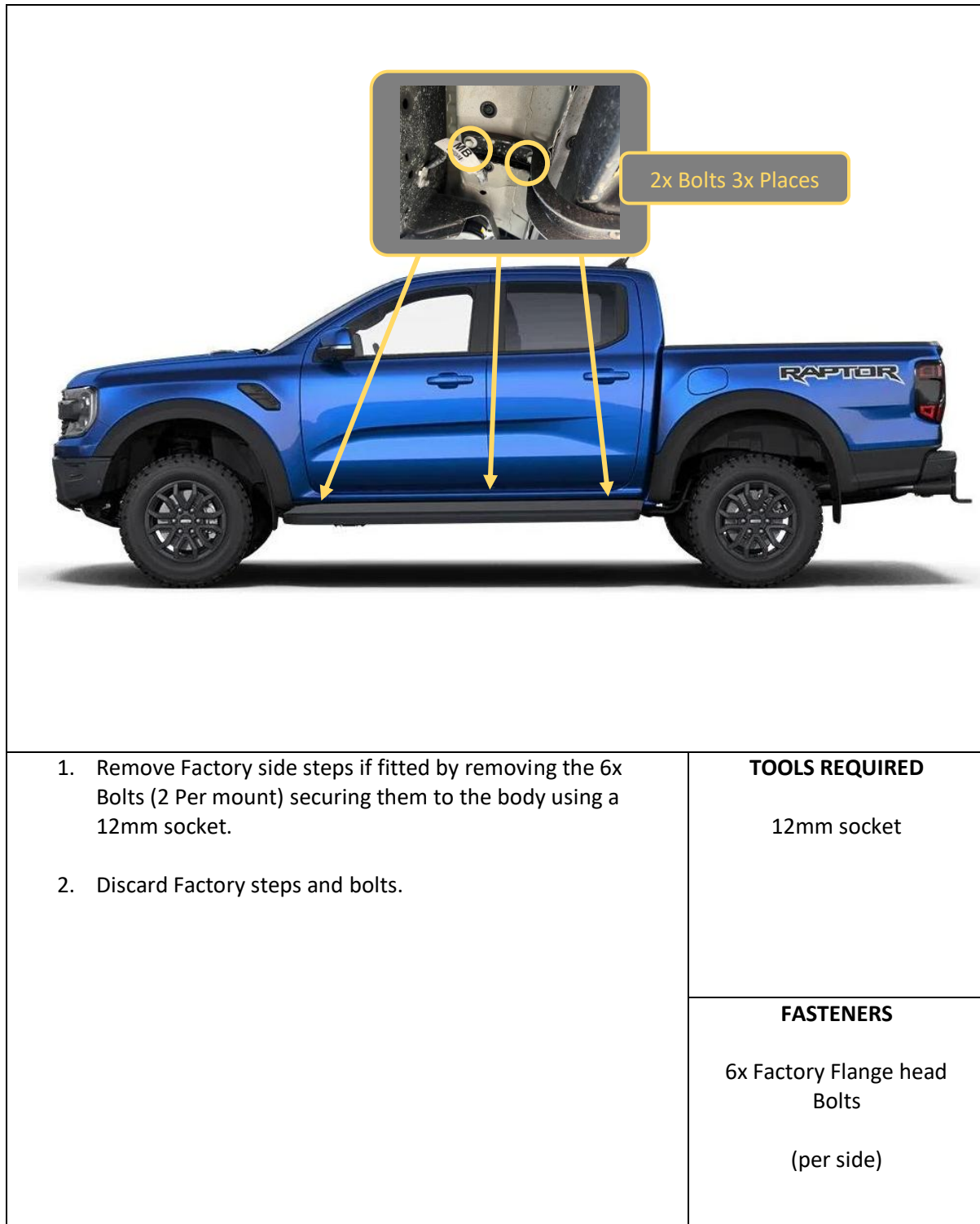
The following tools will be required to install the product.

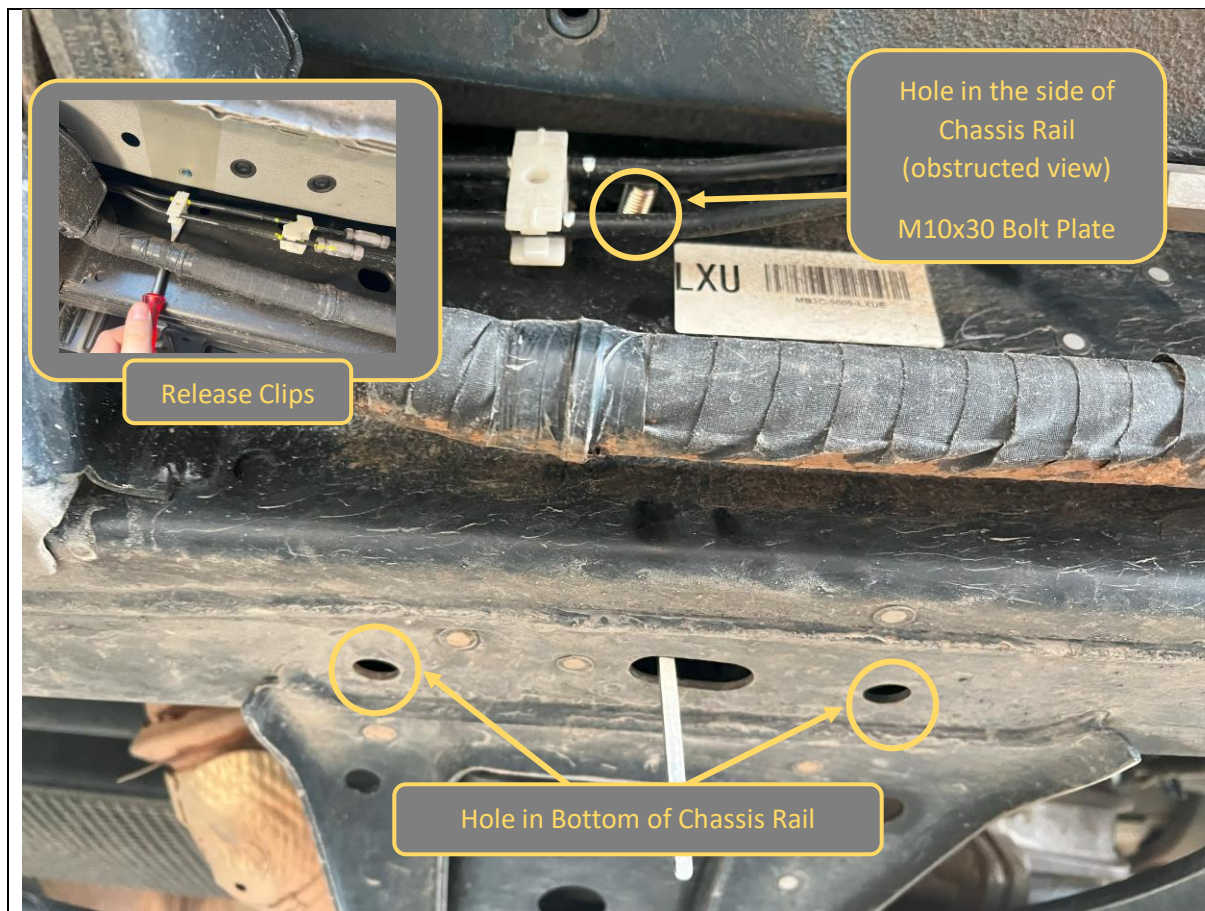
Hand Tools	Power Tools	Workshop Equipment
Metric Socket Set 8-19mm Socket Extension Bar Metric Spanner Set 10-19mm Hex (Allen) Key Set 4-6mm Trim Puller Tool Flat Blade Screwdriver set Phillips Head Screwdriver set Utility Knife Side Cutters	Electric/Air Impact Driver (Optional)	Hydraulic Lift Trolley

## WORKSHOP SAFETY

It is the responsibility of the installer to always complete works in a safe manner. Make sure the following safety equipment is available and precautions are observed whilst fitting this product.

<p>Hearing Protection</p> 	<p>Always wear ear protection when using power tools.</p>
<p>Eye Protection</p> 	<p>Ensure eye protection is always worn when cutting or drilling.</p>
<p>Manual Handling</p> 	<p>Do not attempt to lift bar assemblies or rock sliders on your own.</p> <p>Always use two people to lift or use mechanical Lifting aid such as hydraulic lifting trolley.</p>
<p>Vehicle Support</p> 	<p>Always ensure vehicle is properly supported when working on it. Do not attempt to fit products whilst suspension work is being carried out. Do not work under a vehicle supported only by a jack.</p>





3. Starting on LHS of vehicle Locate features that front mount mounts to, referring to image above.
4. Using a trim tool release the plastic clips securing the hard hoses and wiring harness to the side of the chassis rail to allow extra space to work.
5. Pre-Position the Bolt Plates for the Front Mounts in the locations shown. Bend the stems to allow the plates to be manipulated to the correct positions.
6. Repeat on RHS of vehicle. Features are mirror of LHS, but not obstructed by any looms etc.

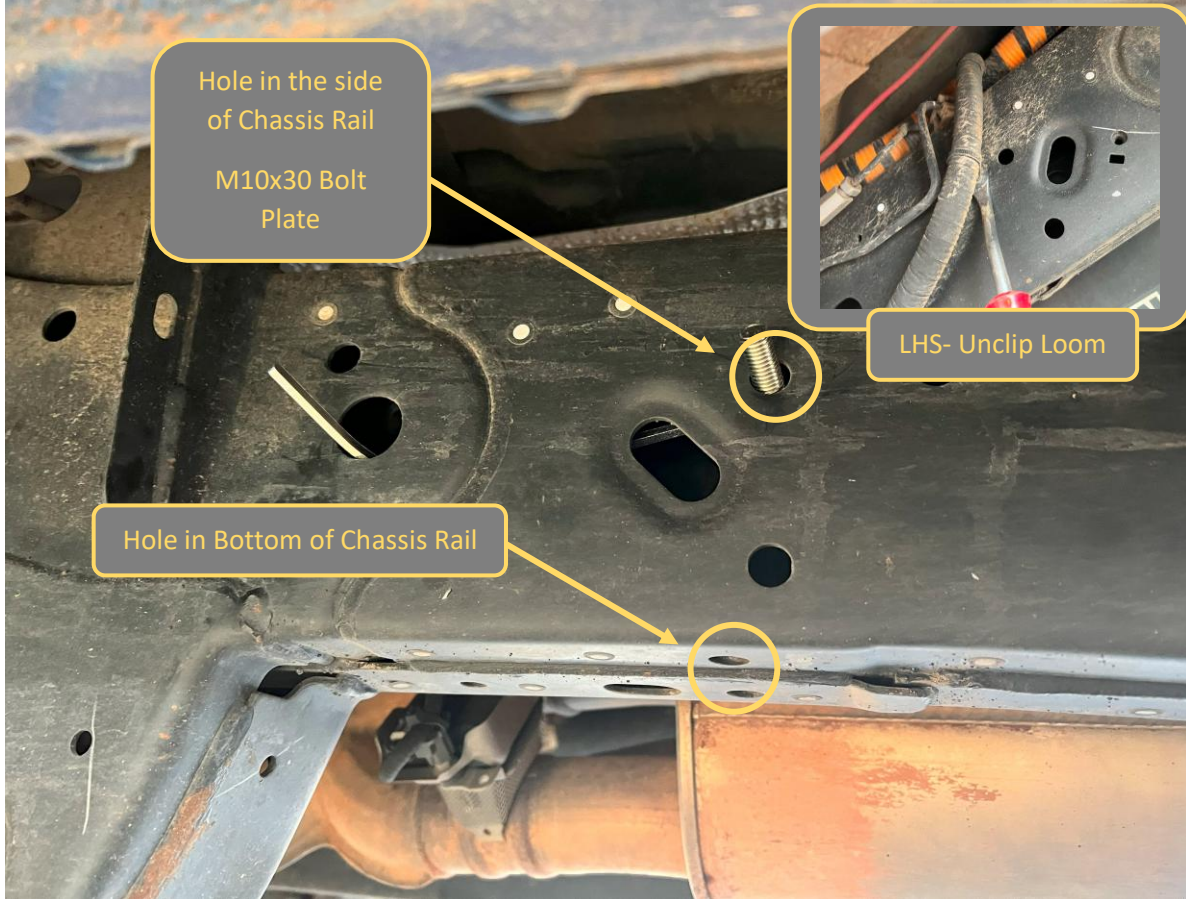
**TOOLS REQUIRED**

Trim Tool

**FASTENERS**

2x M10x30 Bolt Plate





<p>7. Locate the features for the rear mount in the chassis, just forward of the control arm hanger as annotated in the image above</p> <p>8. On the LHS chassis there is a wiring loom quite close to this point. Unclip from chassis with trim tool.</p> <p>9. Feed in bolt plate for the top mount, using large hole in the side of chassis towards body mount, and position with thread protruding through the hole.</p> <p>10. Repeat on both sides of vehicle.</p>	<b>TOOLS REQUIRED</b>
<b>FASTENERS</b>  1x M10x30 Bolt Plate  Per Side	





11. Unpack welded slider assembly and position on lifting trolley such that mounts sit approximately level.	<b>TOOLS REQUIRED</b>  Lifting Trolley
	<b>FASTENERS</b>



12. With assistance from another person fit the slider to the vehicle and secure to pre-positioned bolt plates with M10 Flange Nuts.

13. We find the best way to achieve this is to have one person underneath the car to manipulate the mounts and nut / bolt plates into position and a second person to assist support and position the slider assembly. It is necessary to move the slider inwards first and then up to the final position.

**NOTE:** The preplaced bolt plates will need to be manipulated back into the chassis momentarily to allow the slider to move up into the correct position.

14. Ensure the sliders sit directly against the chassis rail and do not pinch or trap any electrical harnesses or fluid lines.

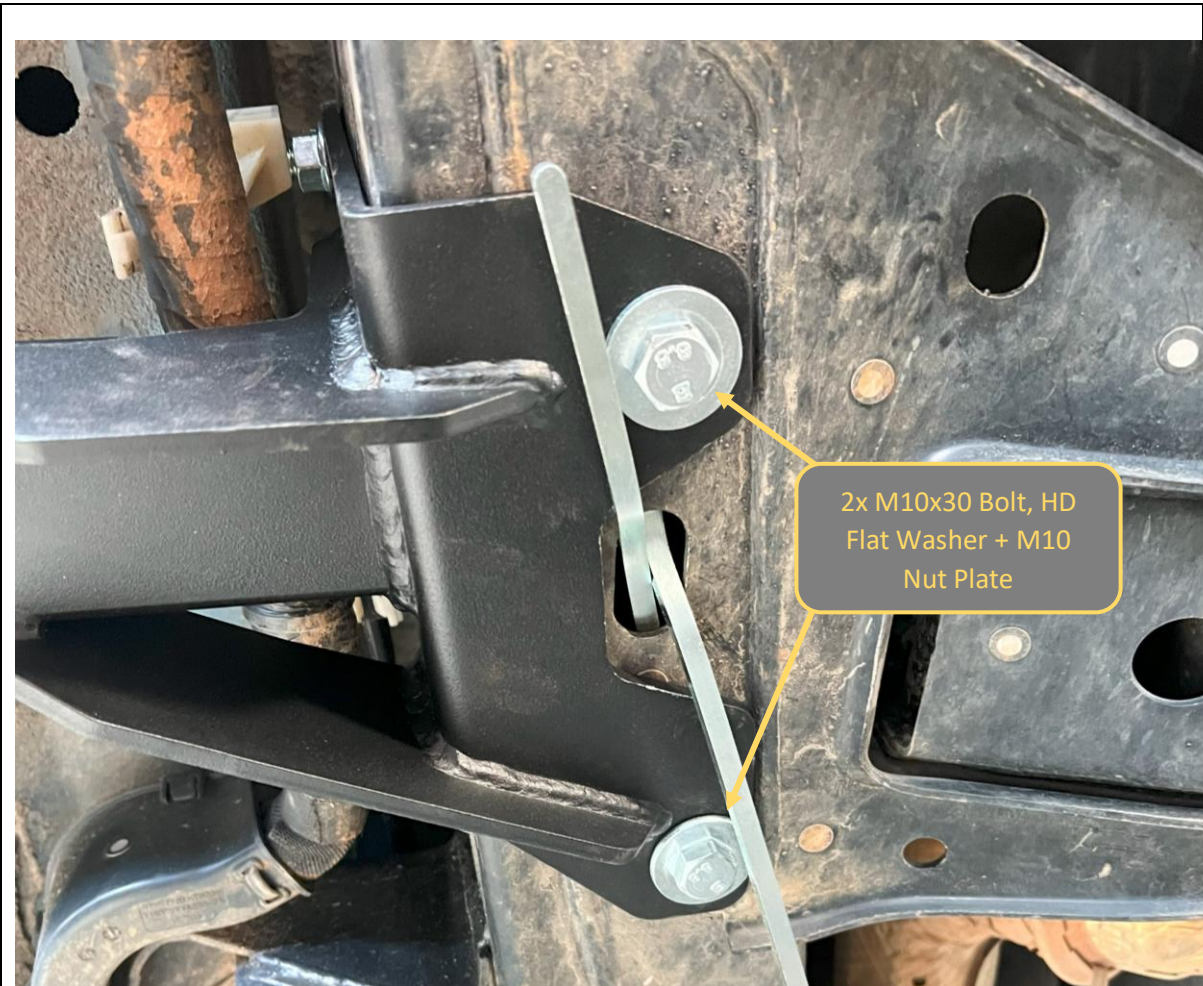
#### TOOLS REQUIRED

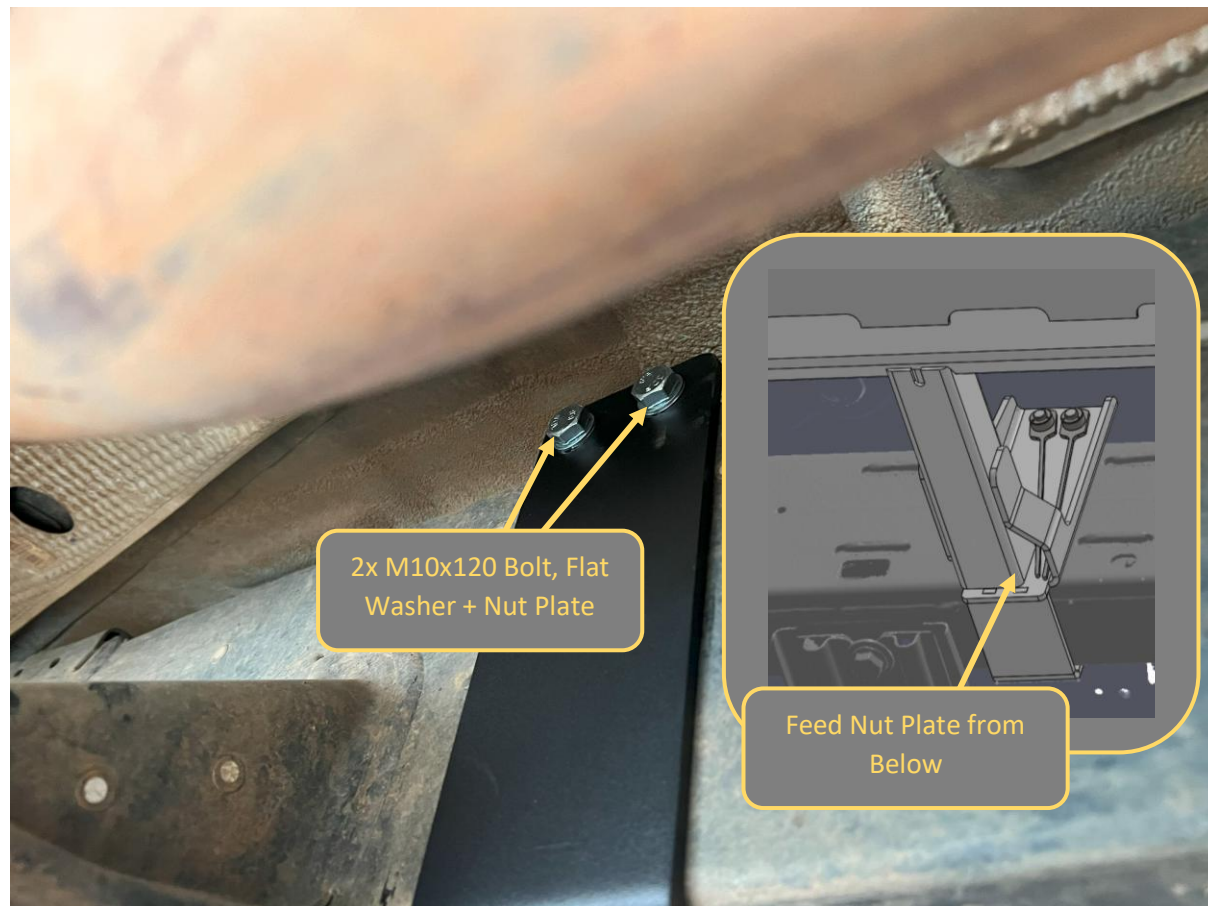
Lift Trolley  
Patience  
Finger Dexterity

#### FASTENERS

2x M10 Flange Nut



	
<p>15. Once secure, finish front mount installation securing the lower mounting points with 2x M10x30 Bolts, HD flat washers and M10 Nut plates.</p>	<p><b>TOOLS REQUIRED</b></p>
	<p><b>FASTENERS</b></p> <p>2x M10 x30 Bolt 2x M10 HD Washer 2x M10 Nut Plate</p>



16. Secure center mount using 2x M10x120mm bolts, Flat washers, and Nut plates. Fit bolts from the inside of the chassis rail.

17. Feed nut plates from below on side where nut location is obstructed by body

**TOOLS REQUIRED****FASTENERS**

2x M10 x120 Bolt  
2x M10HD Washer  
2x M10 Nut Plate

<ol style="list-style-type: none"><li>18. Finish Rear mount installation securing Lower mounting point with M10x30 Bolt, HD flat washers and M10 Nut plate.</li><li>19. Snug all mount bolts, first on the bottom, then on the side to pull mounts toward chassis. Ensure mounts are sitting against chassis rails.</li><li>20. Fully tighten mounting bolts, Starting on bolts on the bottom of chassis, then on the side of chassis.</li></ol>	<b>TOOLS REQUIRED</b>  15-16mm Spanner/Socket
	<b>FASTENERS</b>  1x M10 x30 Bolt 1x M10 HD Washer 1x M10 Nut Plate – Short Stem





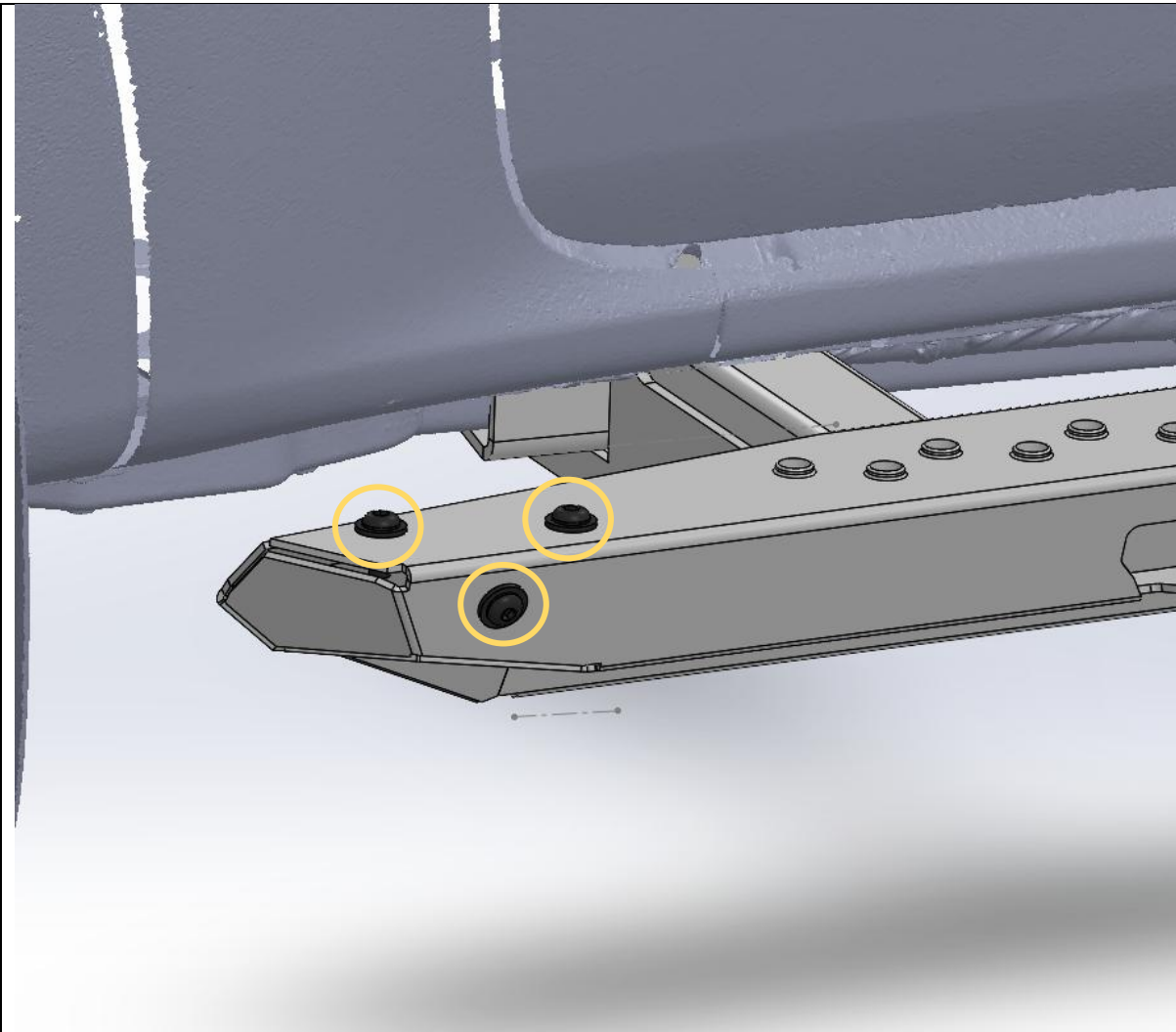
21. Check that step is sitting level to body / chassis. If the step is not level, it is likely that bolts were tightened out of sequence and mounts are not sitting flat against the chassis. To remedy loosen bolts and Repeat Steps 19 and 20.
22. Repeat slider fitting steps 11-21 for the other side of the vehicle.

**TOOLS REQUIRED**

15/16mm socket / spanner

**FASTENERS**





<p>23. Fit the supplied M8x20 Black Buton head bolts and Black Washers to cover side rail attachment threads on front end of the slider step. These threads are for future side rail fitment.</p> <p>24. Double Check all fasteners are tight, and you are done!</p>	<p><b>TOOLS REQUIRED</b></p> <p>5mm Hex Key</p>
	<p><b>FASTENERS</b></p> <p>3x M8x20 Black Button Head 3x Black M8 Washer</p>



**Congratulations!**  
**Head for the tracks and enjoy your newly protected Raptor!**